

Temperature Sensor Module

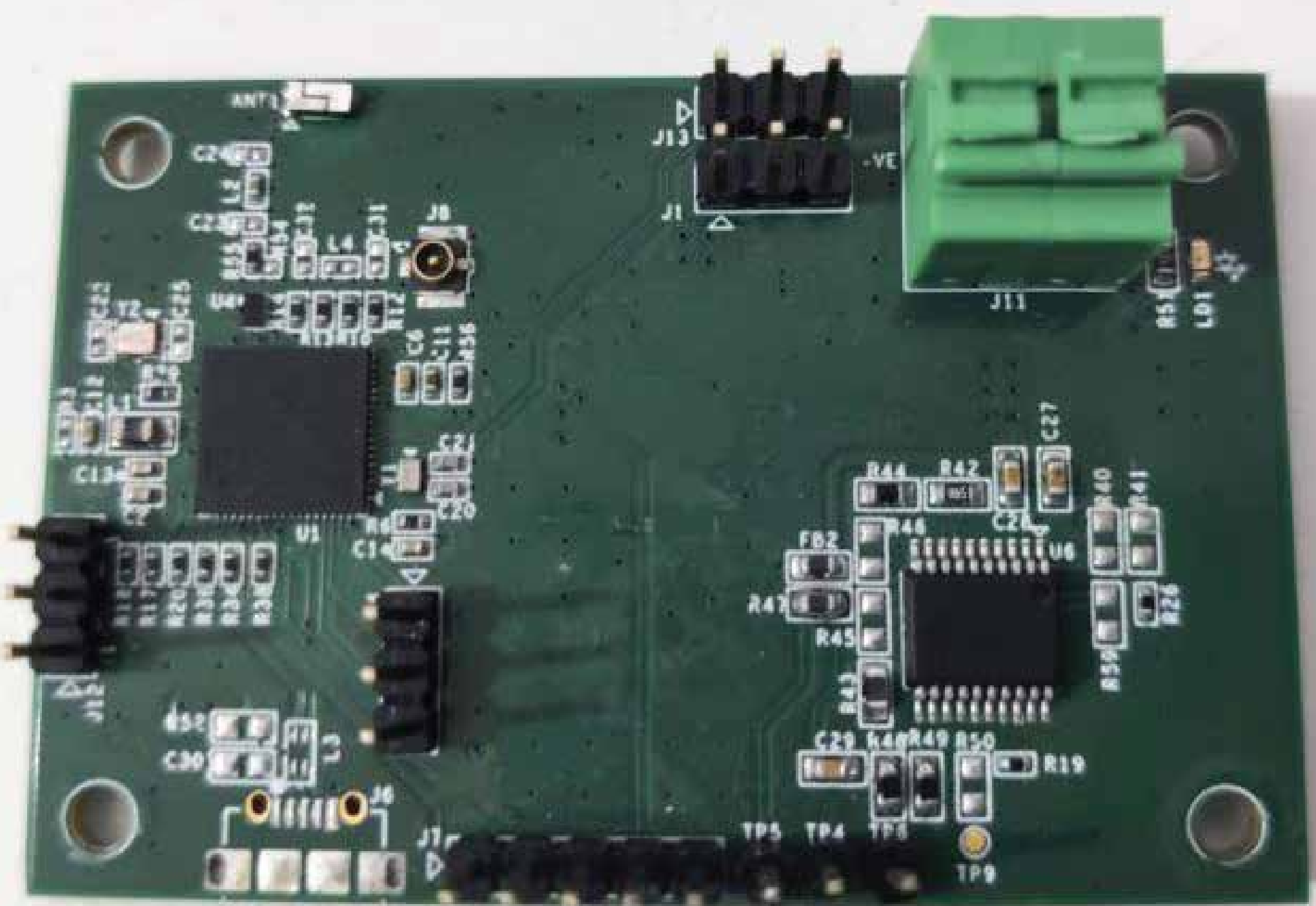


Temperature Sensor Module is a Smart IoT device based on Bluetooth Low Energy 5.0. Module is Designed to measure the Temperature of the given environment/system and analyze the System health. Module has external RTD Temperature sensor with 3-Wire output and Temperature Data can be sent over Bluetooth to Gateway for the Remote Monitor Application. Module supports Mesh Application to Connect to Multiple Sensor Nodes.

IoT hardware,
software and
smart product
development

Key Features:

- Arm®-based Cortex®-M4 Wireless MCU with BLE 5.0 Support.
- External RTD Temperature Sensor with 3-Wire Output.
- Measurement range -100°C to +200°C
- On Board SPI Flash for Temperature Data Storage.
- Chip Antenna for Effective Communication Range.



Mechanical specifications:

- Module Dimensions: 90mm x70mmx40mm (LWH)
- Enclosure Mounting provision: Wall mount and DIN rail
- Temperature mounting provision: R1/2 ISO7
- Sealed Enclosure: IP-65
- Weight: ~200 gram
- FR rated material

Specifications:

- Power Supply Operating Range: 4.7V~6V
- Bluetooth Specification: Bluetooth® 5.0 with Configurable Output Power
- On Board Chip Antenna for Long Range.
- Wide operating temperature range -40 °C to +85 °C

Measurement data:

- Temperature -100°C to +200°C
- Temperature can be measured in both positive and negative side.

www.kemsys.com

Contact Us

Offices : Bangalore | Ahmedabad | Dallas
Email : communication@kemsys.com
Phone : IND : + 91 86003 38049
USA : + 1 (210) 446 9171